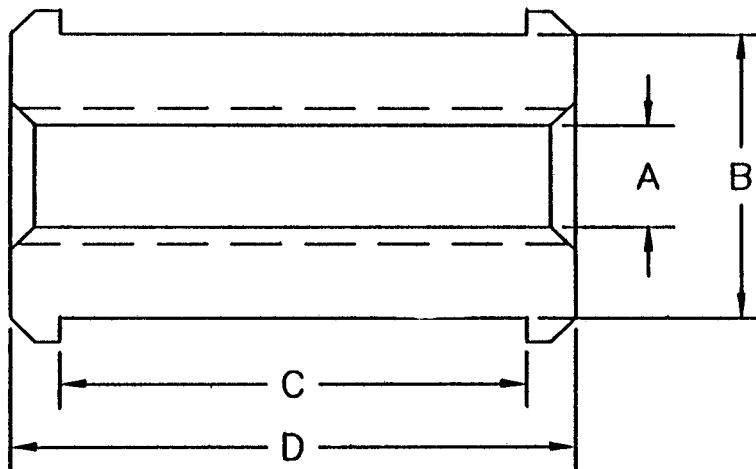


Est. 1958



RUBBER SNAP-IN BEARING



PART NO.	SHAFT SIZE	A FREE ID	B FREE OD	C	D
10047600	1	1.035	1.265	1.500	2.000
10047660	7/8	.905	1.390	2.750	3.250
10047665	1	1.036	1.390	2.750	3.250
10047666	1*	1.046*	1.390	2.750	3.250
10047685	1 3/16	1.220	1.520	2.500	3.250
10047690	1 3/16	1.198	1.640	2.375	2.812
10047700	1 1/8	1.155	1.760	2.750	3.250
10047705	1 3/16	1.220	1.760	2.750	3.250
10047715	1 1/4	1.260	1.760	2.750	3.250
10047720	1 3/8	1.415	1.760	2.750	3.250
10047755	1	1.036	2.009	3.125	3.625
10047756	1*	1.046*	2.009	3.125	3.625
10047765	1 1/8	1.140	2.009	3.125	3.625
10047770	1 3/16	1.220	2.009	3.125	3.625
10047771	1 3/16*	1.230*	2.009	3.125	3.625
10047780	1 1/4	1.265	2.009	3.125	3.625
10047785	1 3/8	1.415	2.009	3.125	3.625

*Oversized core for chrome shaft

Est. 1958



RUBBER SNAP-IN BEARING

PART NO.	SHAFT SIZE	A FREE ID	B FREE OD	C	D
10047786	1 3/8*	1.425*	2.009	3.125	3.625
10047795	1 7/16	1.455	2.009	3.125	3.625
10047800	1 1/2	1.525	2.009	3.125	3.625
10047875	1.660	1.660	2.125	3.188	3.625
10047840	1 3/8	1.415	2.512	3.625	4.125
10047850	1 1/2	1.525	2.512	3.625	4.125
10047851	1 1/2*	1.535*	2.512	3.625	4.125
10047860	1 5/8	1.650	2.512	3.625	4.125
10047865	1 11/16	1.713	2.512	3.625	4.125
10047866	1 11/16*	1.723*	2.512	3.625	4.125
10047885	1 7/8	1.925	2.512	3.625	4.125
10047890	1 15/16	1.957	2.512	3.625	4.125
10047891	1 15/16*	1.967*	2.512	3.625	4.125
10047905	1 1/8	1.145	3.015	4.500	5.000
10047915	1 1/4	1.284	3.015	4.500	5.000
10047920	1 3/8	1.405	3.015	4.500	5.000
10047930	1 1/2	1.525	3.015	4.500	5.000
10047935	1 5/8	1.645	3.015	4.500	5.000
10047945	1 11/16	1.710	3.015	4.500	5.000
10047960	1 7/8	1.910	3.015	4.500	5.000
10047965	1 15/16	1.957	3.015	4.500	5.000
10047970	2 1/8	2.155	3.015	4.500	5.000
10047975	2 3/16	2.210	3.015	4.500	5.000

*Oversized core for chrome shaft